

# TANOI



# PM ALLROUND

## TECHNICAL SPECIFICATIONS:



True allround capacities



Suitable for tapping cast iron as well as stainless steels



High performance due to micro grain powder metal



TCX coating for high wear resistance and low friction



Cutting geometry designed to minimize cutting forces



Low heat generation and excellent chip control



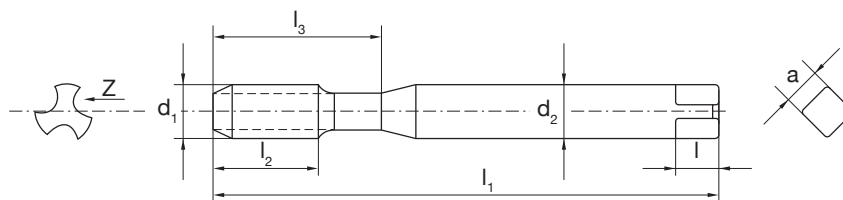

**STEEL**  
500-800  
N/mm<sup>2</sup>
**STEEL**  
800-1300  
N/mm<sup>2</sup>
**INOX**  
≤1200  
N/mm<sup>2</sup>
**GG/G**  
CAST

**ALU**  
Si <10%

**ALU**  
Si >10%

**ADC**
**ZDC**

## MACHINE TAP | CUTTING



d <sub>1</sub>	P	Din	l <sub>1</sub>	l <sub>2</sub>	l <sub>3</sub>	d <sub>2</sub>	l	a	Z	Code	Ø mm
3	0.5		56	11	18	3.5	6	2.7	3	883.065	2.9
4	0.7		63	13	21	4.5	6	3.4	3	883.075	3.3
5	0.8	DIN 371	70	16	25	6	8	4.9	3	883.085	4.2
6	1		80	19	30	6	8	4.9	3	883.090	5
8	1.25		90	22	35	8	9	6.2	3	883.100	6.8
10	1.5		100	24	39	10	11	8	3	883.110	8.5
12	1.75		110	28	--	9	10	7	3	884.060	10.2
14	2	DIN 376	110	30	--	11	12	9	3	884.065	12
16	2		110	32	--	12	12	9	3	884.070	14
18	2.5		125	34	--	14	14	11	3	884.075	15.5
20	2.5		140	34	--	16	15	12	3	884.080	17.5



d <sub>1</sub>	P	Din	l <sub>1</sub>	l <sub>2</sub>	l <sub>3</sub>	d <sub>2</sub>	l	a	Z	Code	Ø mm
3	0.5		56	5	18	3.5	6	27	3	898.065	2.9
4	0.7		63	7	21	4.5	6	3.4	3	898.075	3.3
5	0.8	DIN 371	70	8	25	6	8	4.9	3	898.085	4.2
6	1		80	10	30	6	8	4.9	3	898.090	5
8	1.25		90	13	35	8	9	6.2	3	898.100	6.8
10	1.5		100	15	39	10	11	8	3	898.110	8.5
12	1.75		110	18	--	9	10	7	4	899.060	10.2
14	2	DIN 376	110	20	--	11	12	9	4	899.065	12
16	2		110	20	--	12	12	9	4	899.070	14
18	2.5		125	25	--	14	14	11	4	899.075	15.5
20	2.5		145	25	--	16	15	12	4	899.080	17.5